

,

... , . . , . .

, (2014 .) -
-
. .

, , ,

, .

- , -
- ,
-

. , - , -
- , , -
,

- , -
. , , -
,

, - , -
- , -
,

. , , -
,

, , , . -
,

. 10-20 -
-
-

, - ,

, — , ()
 . . - ,
 (Hallinger, Heck, 1998).
 (Witziers, Bosker, Kruger, 2003),
 (,) (Hamilton &
 Richardson, 1995).
 , , ,
 «
 », ,
 (Shawn, 2009).
 PISA: 2012 (OECD, 2013)
 «
 , , ,
 ,
 ». .
 (distributed leadership) (Harris, 2008).
 , ? ,
 .
 , /
 , ,
 . ,
 ? ,
 .
 ,
 .
 . ,
 — .

(Reardon, Reardon, Rowe, 1996)

(Reardon, Reardon, Rowe, 1996).

(Rowe, Boulgarides, 1983).

New Brunswick (Williams, 2006).

40), (1 2014)

A.

20

web-

SurveyMonkey,

« »,

- ;
- (/);
- (,);
- ;
- (, ,);
- (, .)²⁰.

20 (-

).

1, 2, 4 8, 1

, 8 -

²⁰

.: <https://ru.surveymonkey.com/r/6WK8FPM>

13,4.

).

(n)

(

().

$$\left[n - \frac{\sigma}{2}; n + \frac{\sigma}{2} \right]$$

75,2,

[68,5; 81,8],

81,8,

68,5,

(

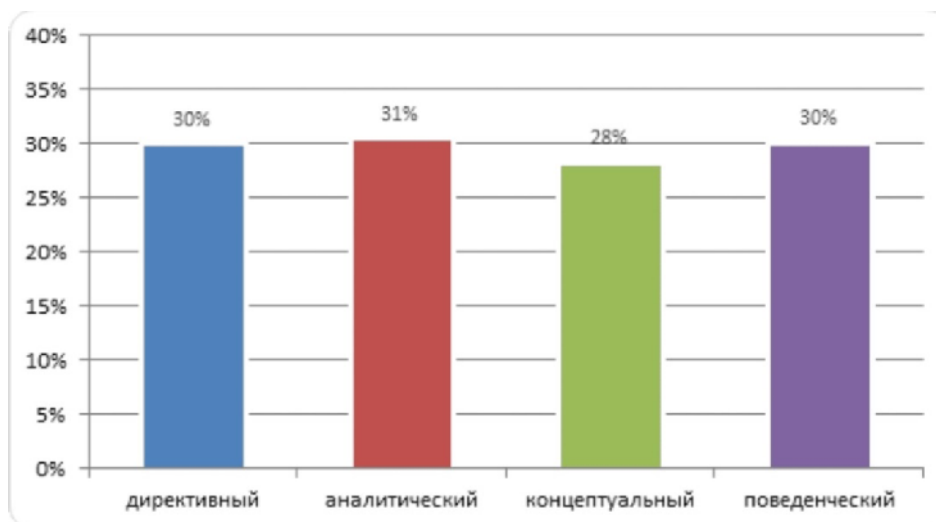
),

21

20 30 % (.1).

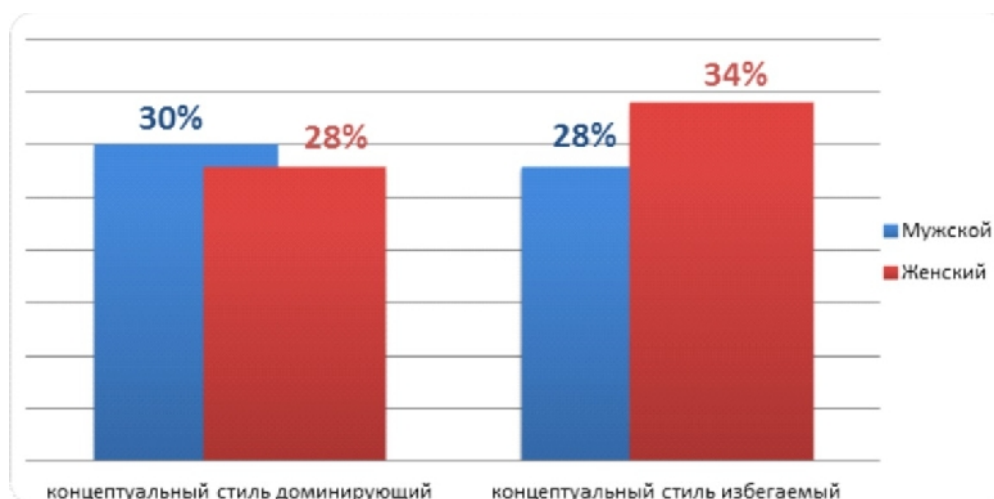
21

8



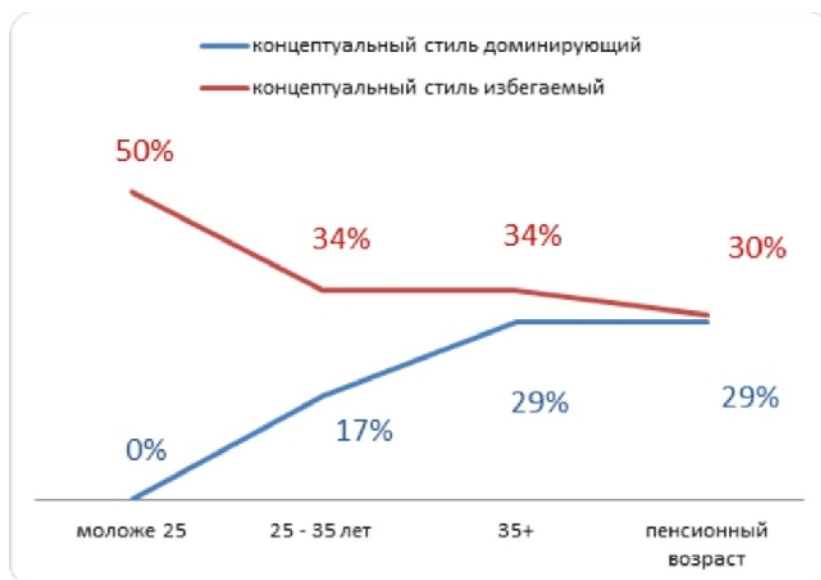
. 1.

(%)



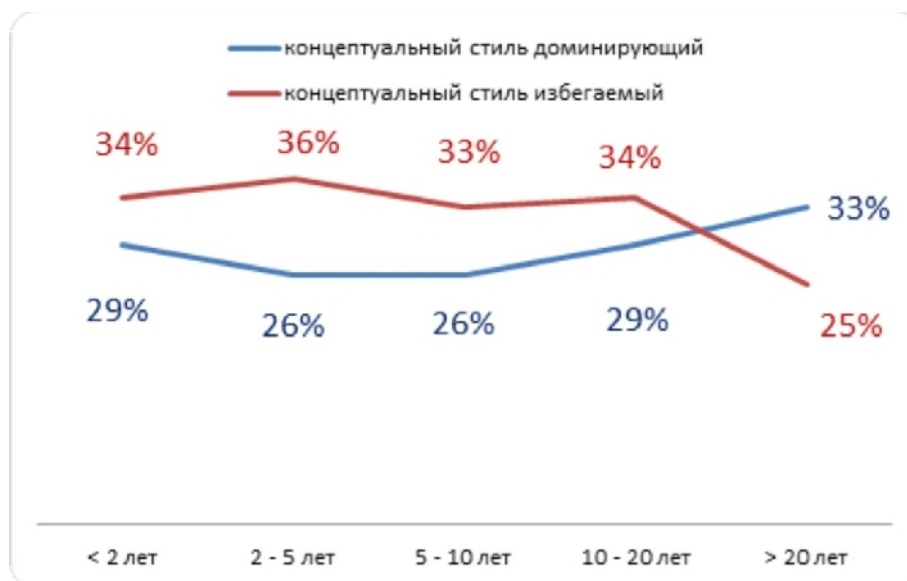
. 2.

(%)



. 3.

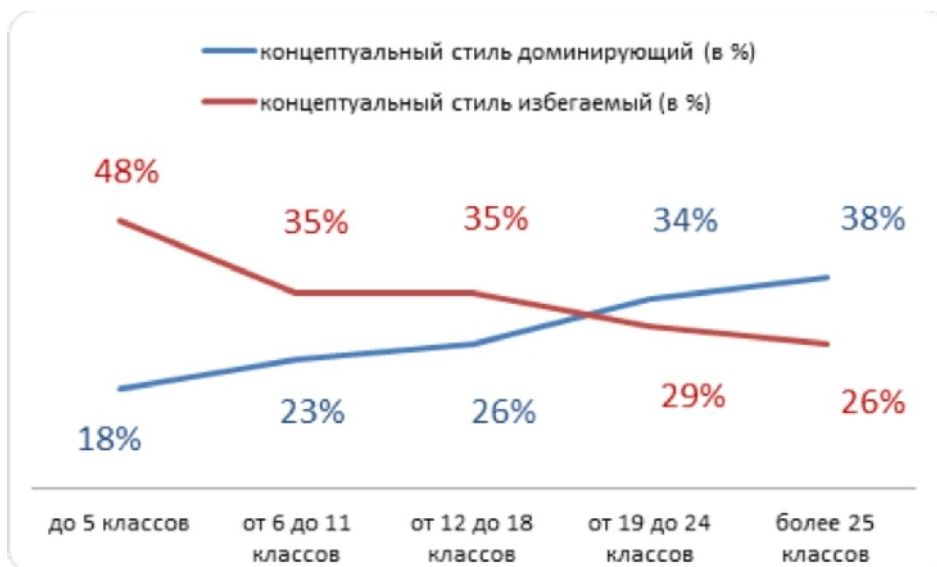
(%)



. 4.

(%)

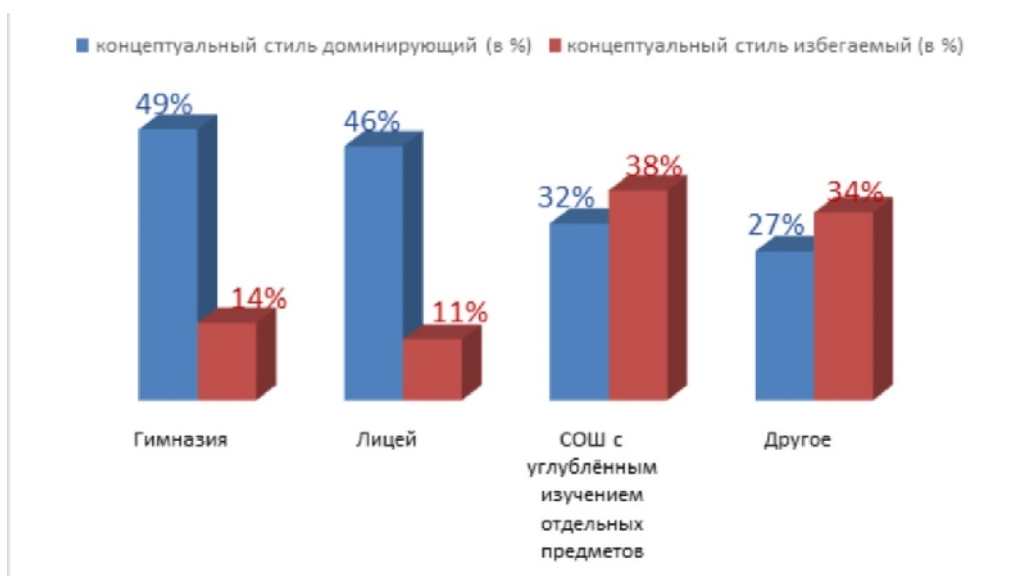
, . 3 4, , .
 , 20 . 20 -
 1994 . . , .



.5.

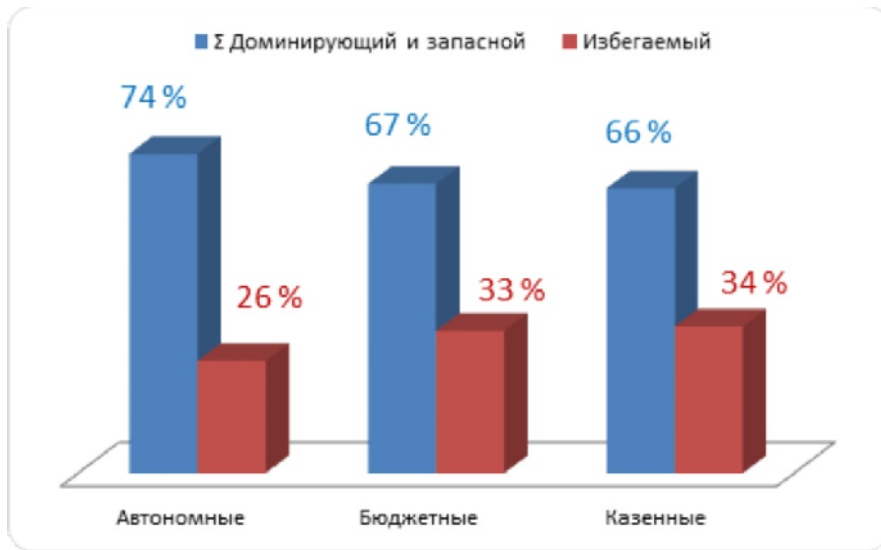
(%)

», 19 24 . 34 % , 38 % (.5). « 25) « , . . . »



.6.

(, ,) (%) ,



. 8.

(%)

90 %

(. 7).

26 %.

,

,

(. 8).

7 %.

((,))

),

» (OECD, 2009).

10–15

1. :
// . – 1996. – 1. – . 12–20;
- 2. – . 14–22; – 3. – . 33–38; – 4. – . 22–25.
2. :
(. . .) // . – 1999. – 6. – . 8–14.
3. Edmonds R. (1979) Effective Schools for the Urban Poor // Educational Leadership. Vol. 37. No 1. P. 15–24.
4. Hallinger P., Heck R.H. (1998) Exploring the Principal's Contribution to School Effectiveness: 1980–1995 // School Effectiveness and School Improvement. Vol. 9. No 2. P. 157–191.
5. Hamilton M.L., Richardson V. (1995) Effects of the Culture in Two Schools on the Process and Outcomes of Staff Development // The Elementary School Journal. Vol. 95. No 4. P. 367–385.
6. Harris A. (2008) Distributed Leadership: Developing Tomorrow's Leaders. London: Routledge.
7. Leithwood K., Jantzi D., Steinbach R. (1999) Changing Leadership for Changing Times. Philadelphia: Open University Press.
8. OECD (2009) Leading to Learn: School Leadership and Management Styles <http://www.oecd.org/berlin/43541674.pdf>.
9. OECD (2013), PISA 2012 Results: What Makes Schools Successful (Volume IV): Resources, Policies and Practices, PISA, OECD Publishing, Paris.
10. Ogawa R.T., Bossert S.T. (2000) Leadership as an Organizational Quality / The Jossey-Bass Reader on Educational Leadership. San Francisco: Jossey-Bass. P. 38–58.

11. Reardon K., Reardon J., Rowe A. (1998) Leadership Styles for the Five Stages of Radical Change // Acquisition Review Quarterly. No 1. P. 129–146 http://www.carterreynolds.com/5_stages_of_leadership.pdf.
12. Rowe A.J., Boulgarides J.D. (1983) Decision Styles – A Perspective // Leadership & Organization Development Journal. Vol. 4. Iss. 4. P. 3–9.
13. Schein E.H. (1992) Organizational Culture and Leadership. San Francisco: Jossey-Bass.
14. Shawn M.T. (2009) Relationship between the Leadership Styles of Principals and School Culture. <http://digitalcommons.georgiasouthern.edu/cgi/viewcontent.cgi?article=1269&context=etd>
15. Williams R.B. (2006) Leadership for School Reform: Do Principal Decision-Making Styles Reflect a Collaborative Approach? // Canadian Journal of Educational Administration and Policy. Iss. 53. P. 1–22.
16. Witziers B., Bosker R.J., Kruger M.L. (2003) Educational Leadership and Student Achievement: The Elusive Search for an Association // Educational Administration Quarterly. Vol. 39. No 3. P. 398–425.